

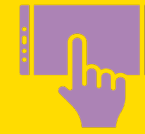
GET STARTED WITH

FLEXSYNC

CLASSROOM TECHNOLOGY

THE BASICS - Connecting to your students

1 TOUCH THE ZOOM TOUCH DISPLAY
to wake up or turn on the system



2 PRESS JOIN, ENTER YOUR MEETING ID & PASSCODE
or your personalized link you created for your class



3 STUDENTS WILL BE CONNECTED!
the students will now be able to see and hear you



4 DISPLAY YOUR CLASS MATERIALS
use your laptop or the doc cam with the room projection system to share
your content with your in class and online participants



READY TO GO?

Before Class

HAVE YOU:

- ✓ Checked the waiting room for any students?
- ✓ Verified with your students they can see and hear you?
- ✓ Started recording if you want to capture your lecture?
- ✓ Ensured your Student Academic Support worker is logged into your session and ready to go?

After Class

HAVE YOU:

- ✓ Stopped your session on the Zoom touch display?
- ✓ Sanitized/wiped down the touch displays?

DID YOU KNOW?

Zoom can be used from your personal laptop or device anywhere. If you have trouble with the FlexSync system, and have your laptop with, you can connect to your meeting using your computer's camera, microphone, and speakers.

HELP & SUPPORT

Contact Classroom
Technology Support!
507.389.3221

Tutorials, Training,
& Support Articles 
mnsu.edu/flexsync

Your Zoom Account
& Help Resources
minnstate.zoom.us

Help Managing Your Virtual Students
look into getting a Student Academic Support
worker, contact CETL@mnsu.edu